



Award winning





Supported Independent Living (SIL) Services

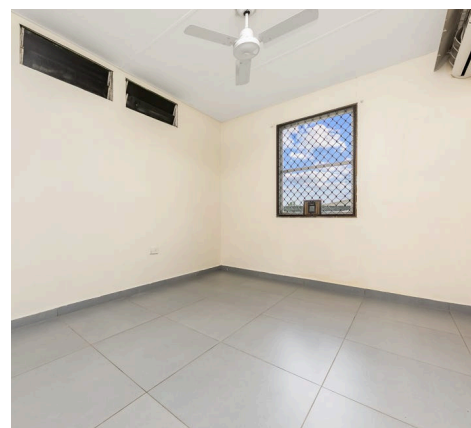
ARE YOU OR SOMEONE YOU KNOW SEEKING A COMFORTABLE AND SUPPORTIVE LIVING ENVIRONMENT IN DARWIN, NT?

ITEC Health is an award winning service provider dedicated to empowering individuals by building their capabilities and creating meaningful opportunities through our NDIS SIL services.

We currently have **1 available room** in our 4-bedroom SIL home and are excited to welcome a new member to our community.

About our accommodation:

-  Located in Darwin, our residence offers a safe, welcoming, and inclusive environment.
-  Located in a prime spot close to shops and transport.
-  Staff are available to provide assistance and guidance 24/7, depending on participant needs.
-  We prioritise independence while offering the necessary support to empower our residents.



Contact Garry today!

 0473 508 808  g.buckton@itecgroup.com.au

